

System Configuration with TTEBuild

TTEBuild – The Tool for Generating Configuration Files for TTEthernet Switches and End Systems

TTEBuild is a modular tool that supports the generation of hardware-dependent device configuration data for TTEthernet switches and end systems as targets.

TTEBuild Network Configuration Plug-in

For 1 Gbit/s available e/o October 2009 – SE02.02.1

For 100 Mbit/s available e/o January 2010 – SE02.01.2

TTEBuild Network Configuration Plug-in takes the network configuration XML as input, which contains the hardware-independent virtual link configuration. Virtual links can support time-triggered, rate-constrained (ARINC 664 part 7) or background traffic. The schedule configuration contains the information with respect to which device sends what virtual link at what time or at what rate on what route through the network.

Additionally the user selects the desired hardware-target platforms within the network. The following targets are supported:

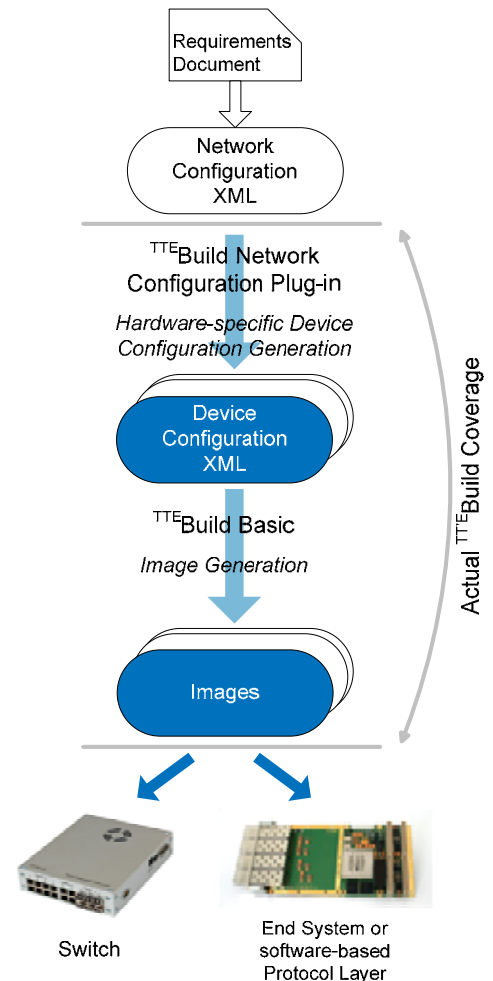
- TTEDevelopment Switch 1 Gbit/s
- TTEDevelopment Switch 100 Mbit/s
- TTEMonitoring Switch 1 Gbit/s
- TTEPCIe Card
- TTEPMC Card
- TTEProtocol Layer

Based on the given inputs, TTEBuild Network Configuration Plug-in generates the device configuration XMLs for each selected hardware target. The device configuration for the TTEProtocol Layer is generated as a C header file. The device configuration XML contains a hardware-dependent schedule configuration on the register-level for a particular device. This device configuration XML is human-readable and may be customized if required.

TTEBuild Basic - already available – SE02.00.1

TTEBuild Basic is a prerequisite to expand the system with the above described TTEBuild Network Configuration Plug-in. It receives the device configuration XML as input and in a final conversion step, TTEBuild Basic creates the actual binary configuration image, ready for download.

TTEBuild and its Network Configuration Plug-in are easy to integrate into the customer's workflow. The XML schemas used to describe these specifications are publicly available. They enable a high level of flexibility when TTEBuild is integrated with third-party tools or customer-specific tool chains. The tool comes with an Eclipse plug-in with an extended XML editor, and can also be used as a stand-alone batch tool with a command line interface for automation.



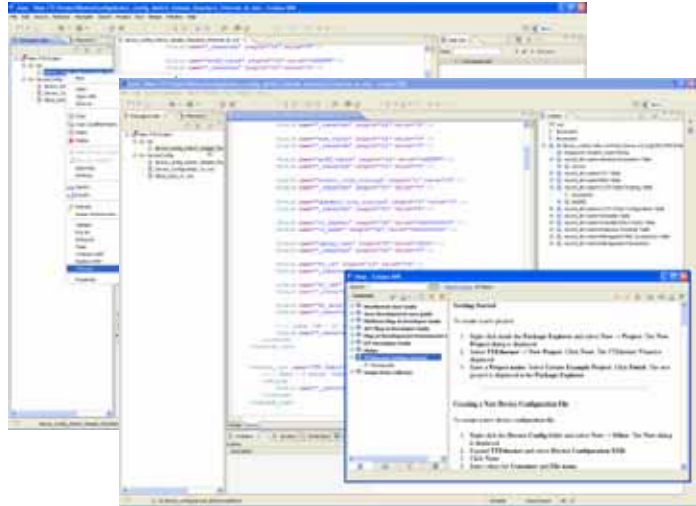
PC Requirements

- Operating System
 - Windows XP (SP2)

- Processor
 - 32-bit x86-compatible
 - Clock speed minimum 1 GHz
 - Dual-core and more than 2 GHz recommended

- Memory
 - Minimum 1 GByte required, 2 GByte RAM recommended

- Disk Space
 - Minimum 1 GByte required
 - 2 GByte hard disk drive recommended



Basic Features

- Batch mode execution
- Flexible programming/scripting interface
- Graphical user interface with Eclipse environment
- Integrated XML editor
- One plug-in for each supported HW device
- Modular design
 - Additional HW devices can be easy integrated

Subject to changes and corrections.

For further information, including price and availability, please contact products@tttech.com

TTEthernet is a registered trademark of TTTech Computertechnik AG. TTE-Build, TTE-Build Basic, TTE-Build Network Configuration Plug-in, TTE-Build Device Configuration Plug-in, TTE-Development Switch 1 Gbit/s, TTE-Development Switch 100 Mbit/s, TTE-Monitoring Switch 1 Gbit/s, TTE-PCIe Card, TTE-PMC Card, and TTE-Protocol Layer are product names of TTTech Computertechnik AG. All other trademarks are the property of their respective holders. To the extent possible under applicable law TTTech Computertechnik AG hereby disclaims any and all liability for the content and use of this preliminary data sheet.